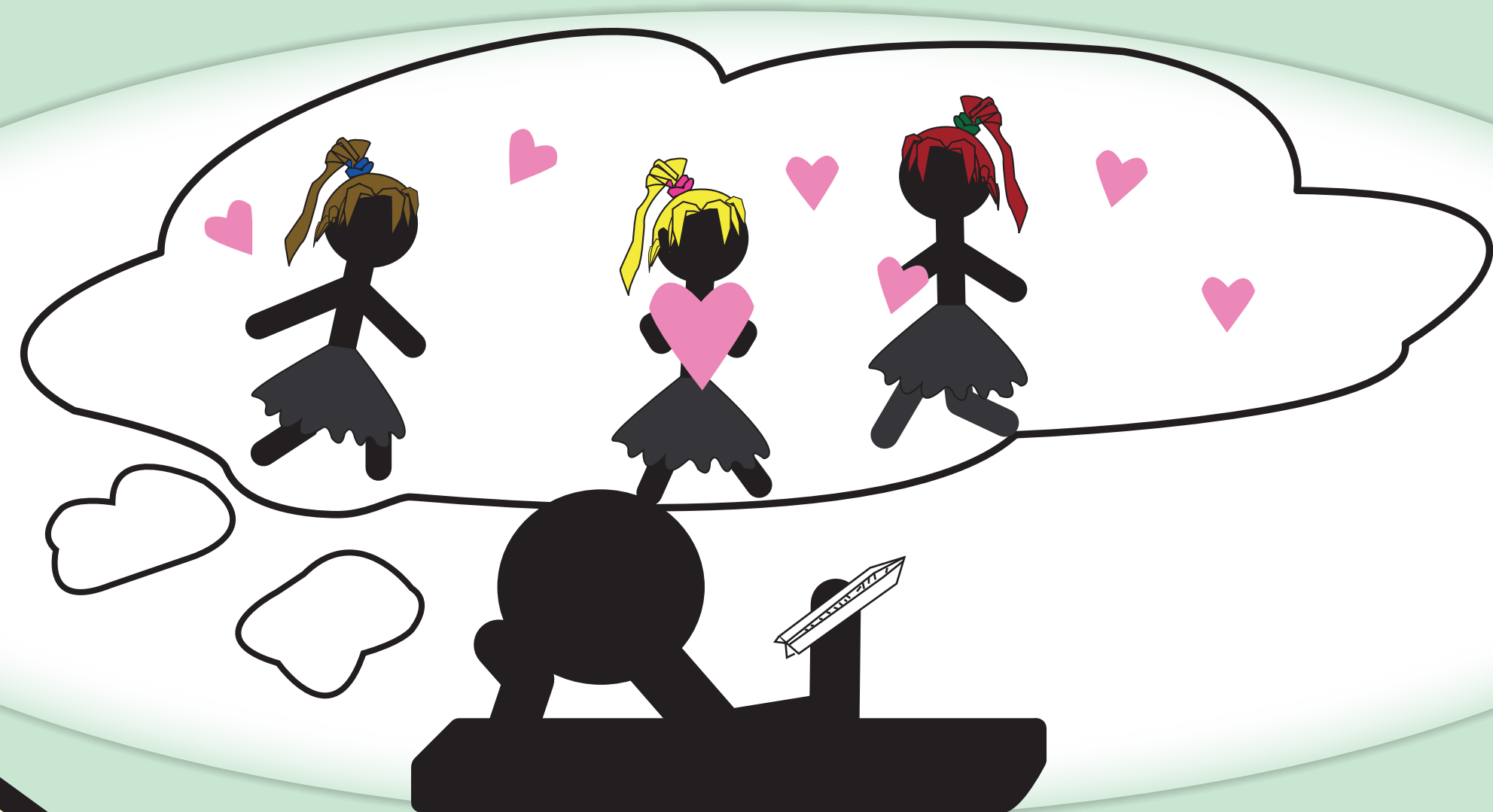


Dating Example for Information Architecture

1



Requirement Analysis

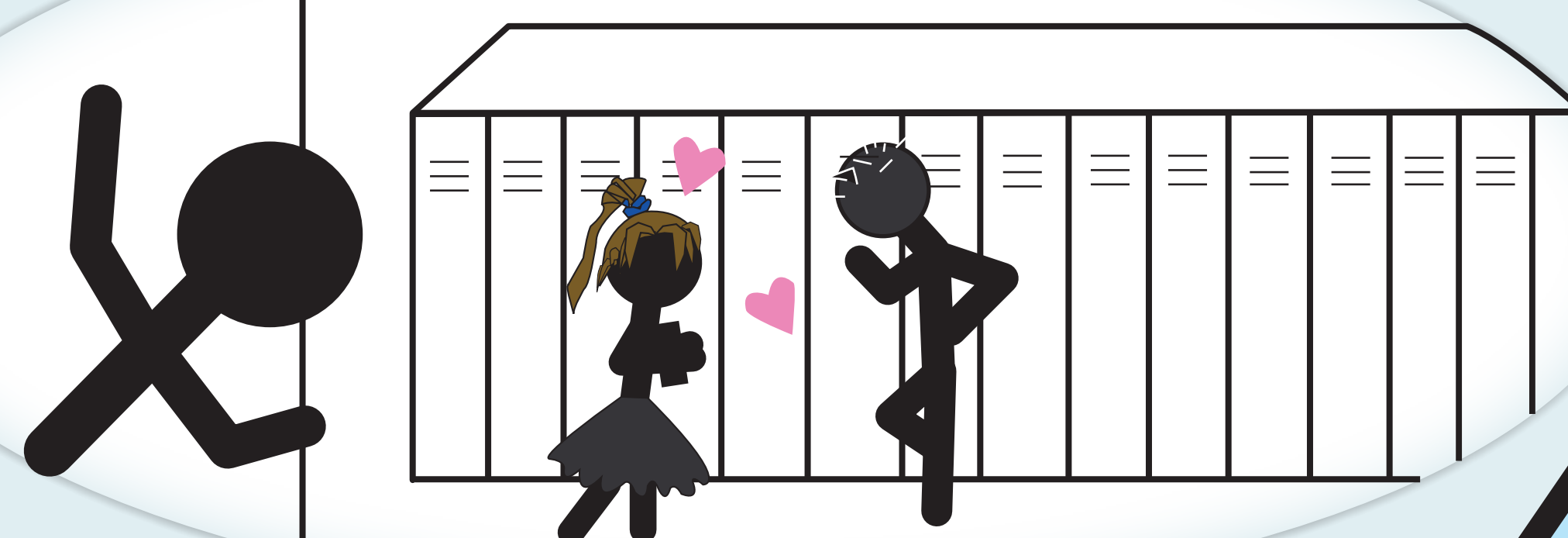
Requirements are the objectives of a business, or client. Requirements include what a user wants to see and whatever goals he/she has; such as consistency, being pleasing to the eye, proper disposition, useful features and functions that can be performed, and the skills of a user and their normal environments. Similarly in dating, a person looks for qualities in a person such as hair or eye color, height and weight, personality and other things of compatibility.

Goal

Information architecture documentation will be also passed to technical engineers who will develop coding to give life to a site. The information architecture document will also be used as a guide to test the usability of the site. User definitions, cases and scenarios will also be used. The information architecture document will be followed as the guideline to develop an effective and user-friendly website. This project will be used by users and other interested parties to achieve a date, or a possible date, as shown by our applicant.



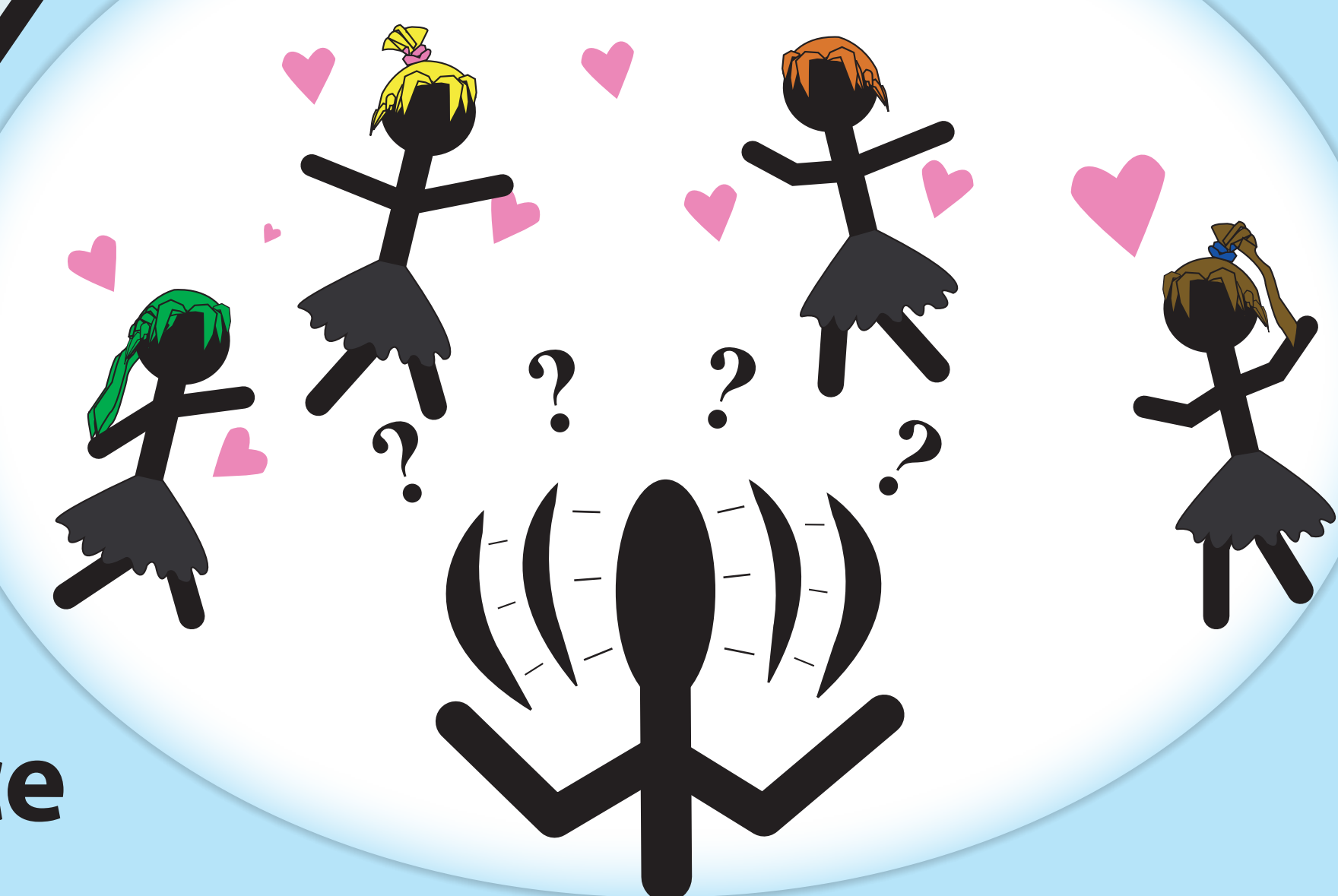
2



Competitive Analysis

An analysis of the competition helps a business, or client, to see what is on the market. It allows for flaws to be avoided and strengths to be improved upon. A competitive analysis saves time, money, resources, and having to redo a project because of failure the first time. In dating, by analyzing admirable peers, one will be able to create a strategy such as how to treat a partner and how to choose one's outfit. The strategy leads to a desirable partner.

3



Audience Definition

Audience Definition defines whom the project is for. There are two similar groups that are defined as the audience and both are the definition. The first being the user group to benefit from the lessons and the second being the group the project was built for (main user group). The main user group will further the relationship to reach the final goal. By acquiring a date, the applicant is one step closer to his/her goal. The main objective for the user would be the same. The readers of the lesson would gain beneficial knowledge as to what steps work for the applicant and what steps were failures, causing the applicant to go back to the proverbial "drawing board." These users will use this information in much the same way the applicant used the competitive analysis and will improve their chances of a date.

9

How do I get a date?



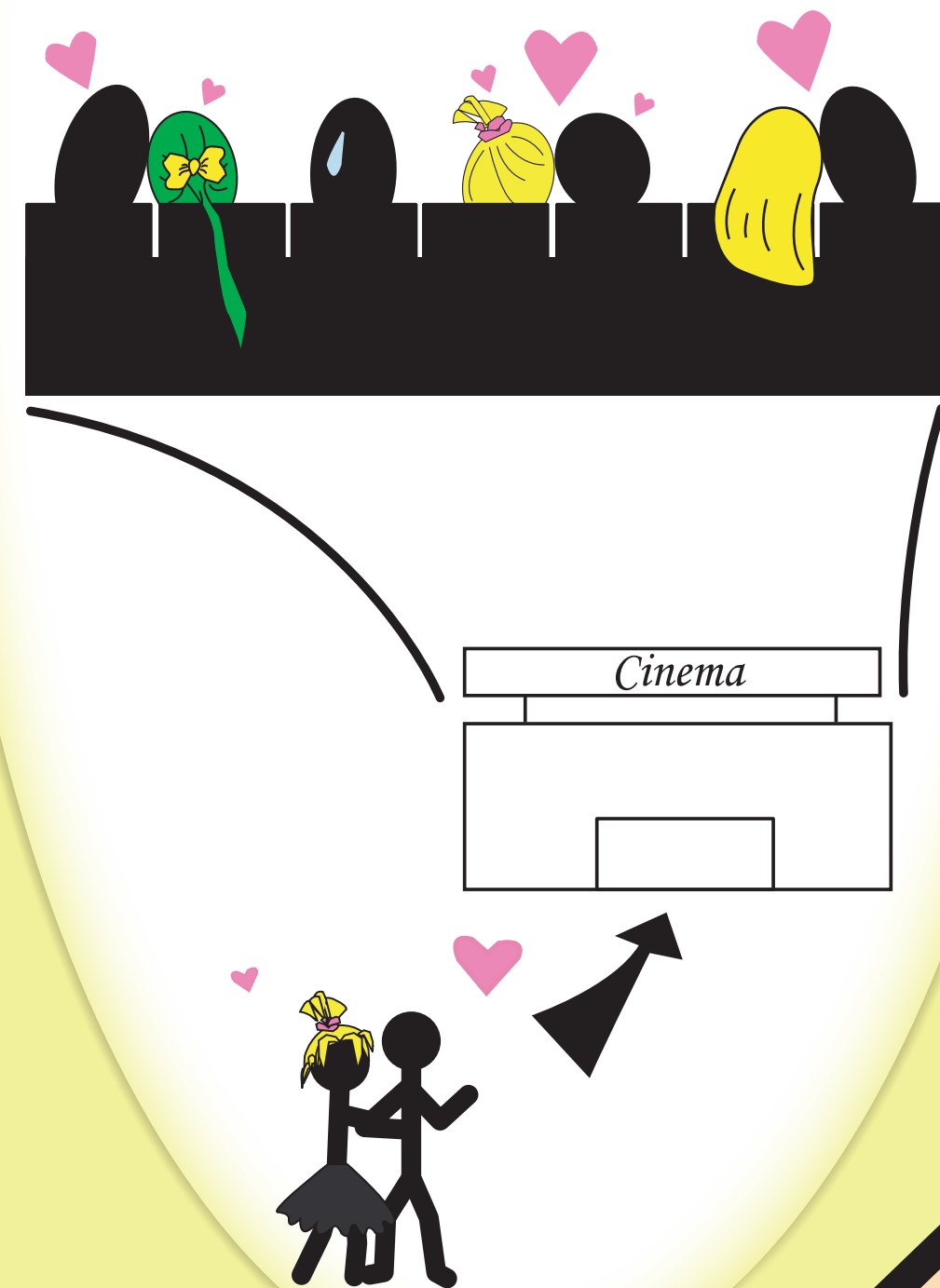
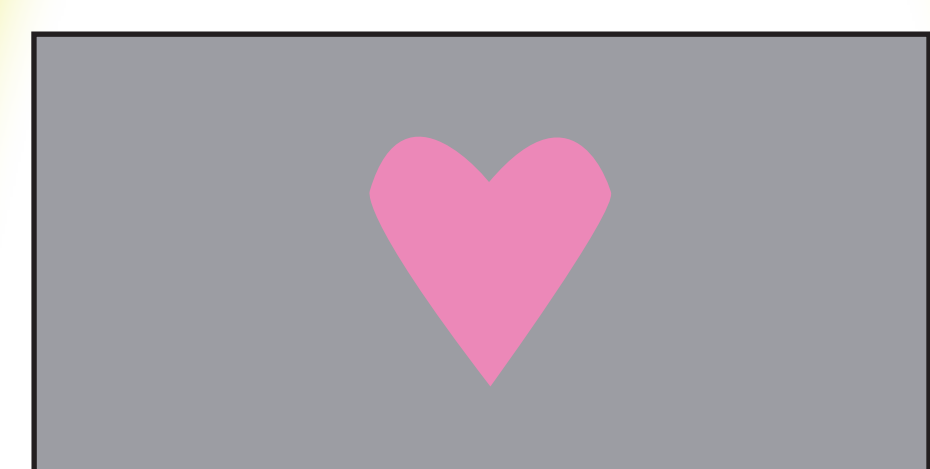
User Scenarios

User scenarios are story-like paragraphs that describe users' possible thoughts. There are also the students of the project to consider. A scenario would include the process that the user went through to get his/her date and what experiences that he/she faced. A scenario is also a short story of a what potential partner can be. The scenario tells what the partner would expect one to do on a date. The scenario helps one to think of how to treat the partner from the other person's perspective.



Wire Frames

A sketch of the intended evening's plans can go a long way to help further the enjoyment of the evening. A wire frame is not a detailed, final outline and does not focus on detail of a website but instead focuses on its overview. The wire frame is a rough layout to what the design of a site will look like. It shows placement of text and images and is used as a general layout plan for designers to follow. The wire frame is used by the designers to mold a final website. In dating, a wire frame can be related to an evening's events. E.g. when a couple goes to a movie, where the couple will set, such as next to each other at the best place to view the screen. It focuses on the hierarchy of the most effective dating plan.



Site Map

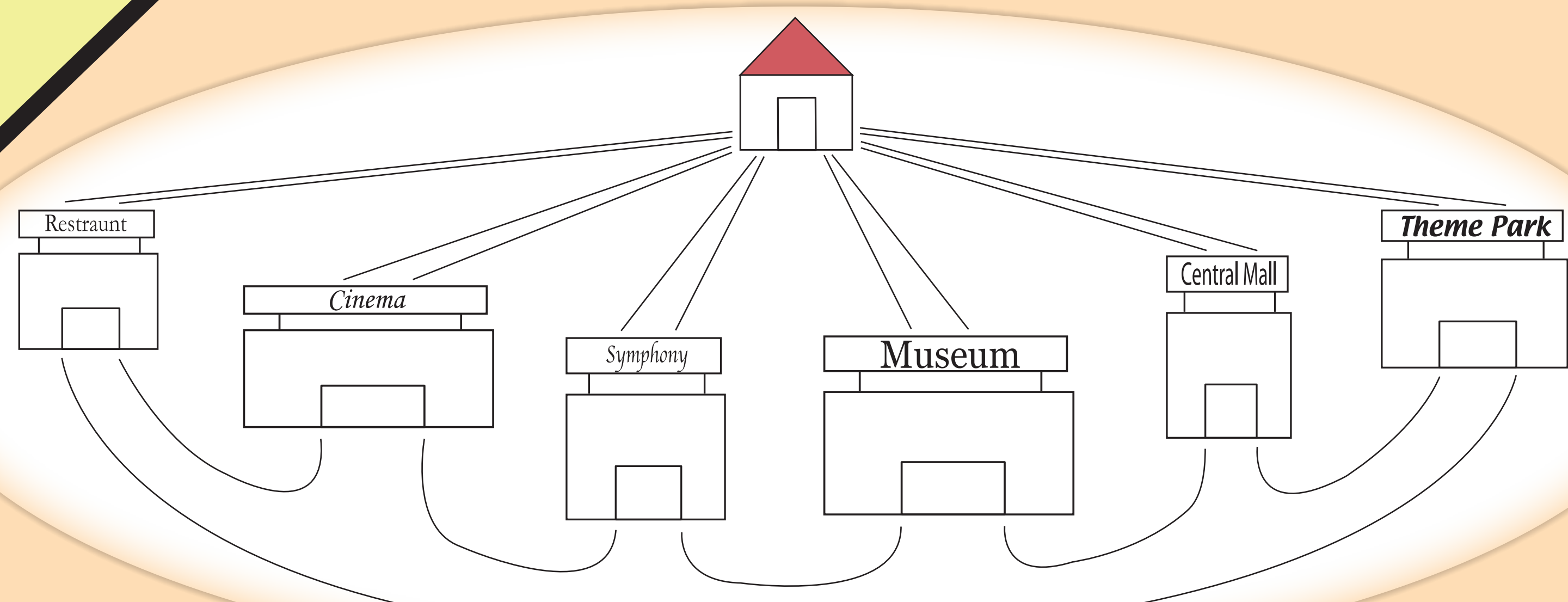
A site map is a visual aid to show how the process is structured. It offers a quick guide to help users find the information that they are looking for. It shows a user what subjects are related and how to get from one process to another. The site map, unlike the process flow, allows the user to view the project as a whole rather than a specific path he/she may choose to follow. The site map shows where the couple will go on a date and future dates and how each relates to the other. It shows the global navigation of a website and how one page can link to the other. E.g. the chain of buildings show how one location can link to the location adjacent to it or a location further down the road. All locations link back home. In essence global navigation.

Content Survey

Content survey is a methodical review of a project's content. It defines what content is needed and the status of that content. In the case of dating the content shown would be the content needed for a successful date. Content herein could include cologne, proper attire, jewelry, flowers or candy, a set of wheels, or even appropriate music. Other information of value to review in the content survey are possible dinner choices; such as a choice of a specific restaurant for the date given a few options. Entrées and desert choices should also be included. A good review to make sure every item is in place and properly accounted for can make an evening go much better and smoother. In web design, a content survey would allow for all pages on the website to be accounted for. Each link, image and all of the text would be checked off and sorted according to content. Server software and requirements for the site as well as software used in making the site should also be accounted for in the content survey. Basically any and everything to do with the site should be cataloged here.

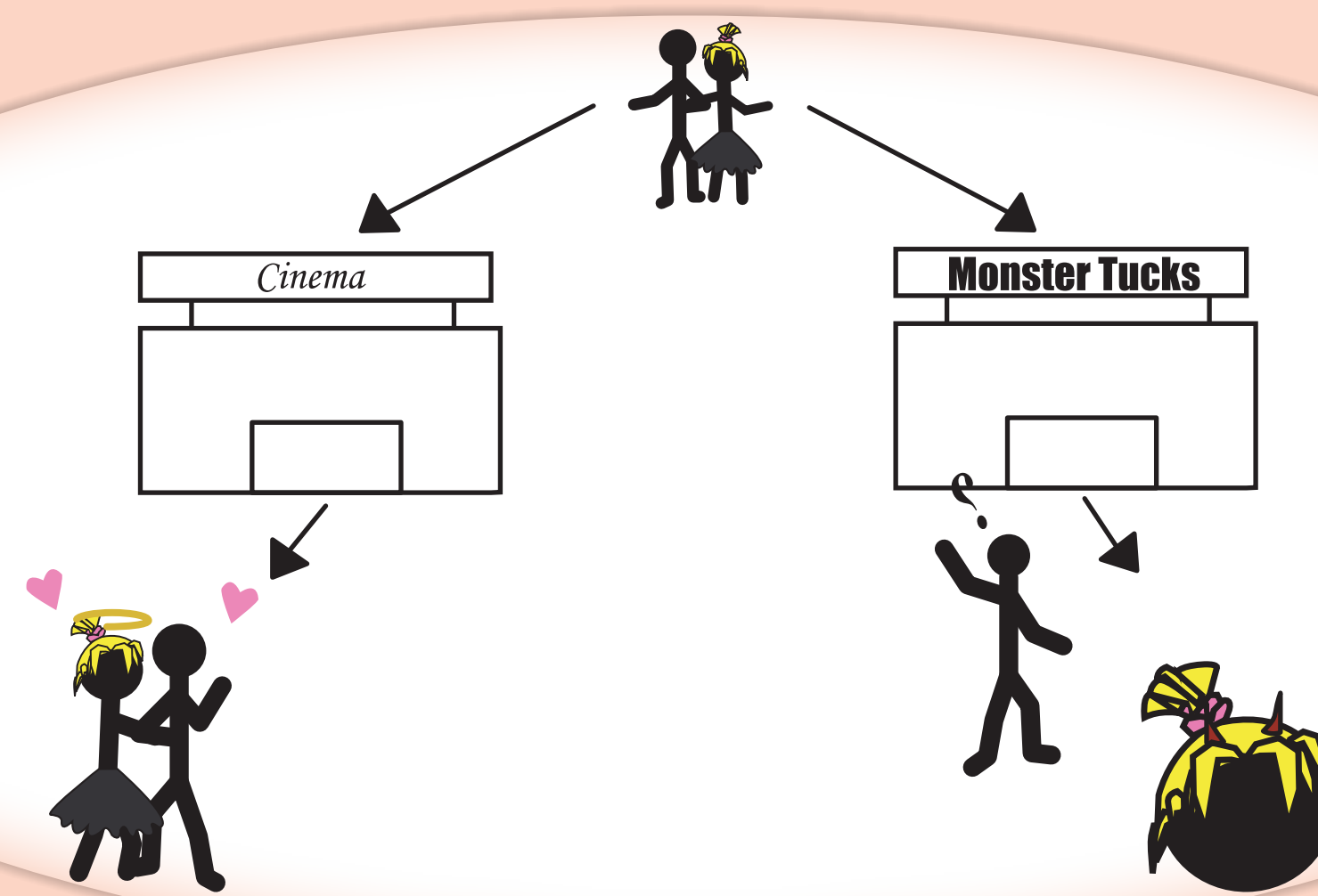
4

8



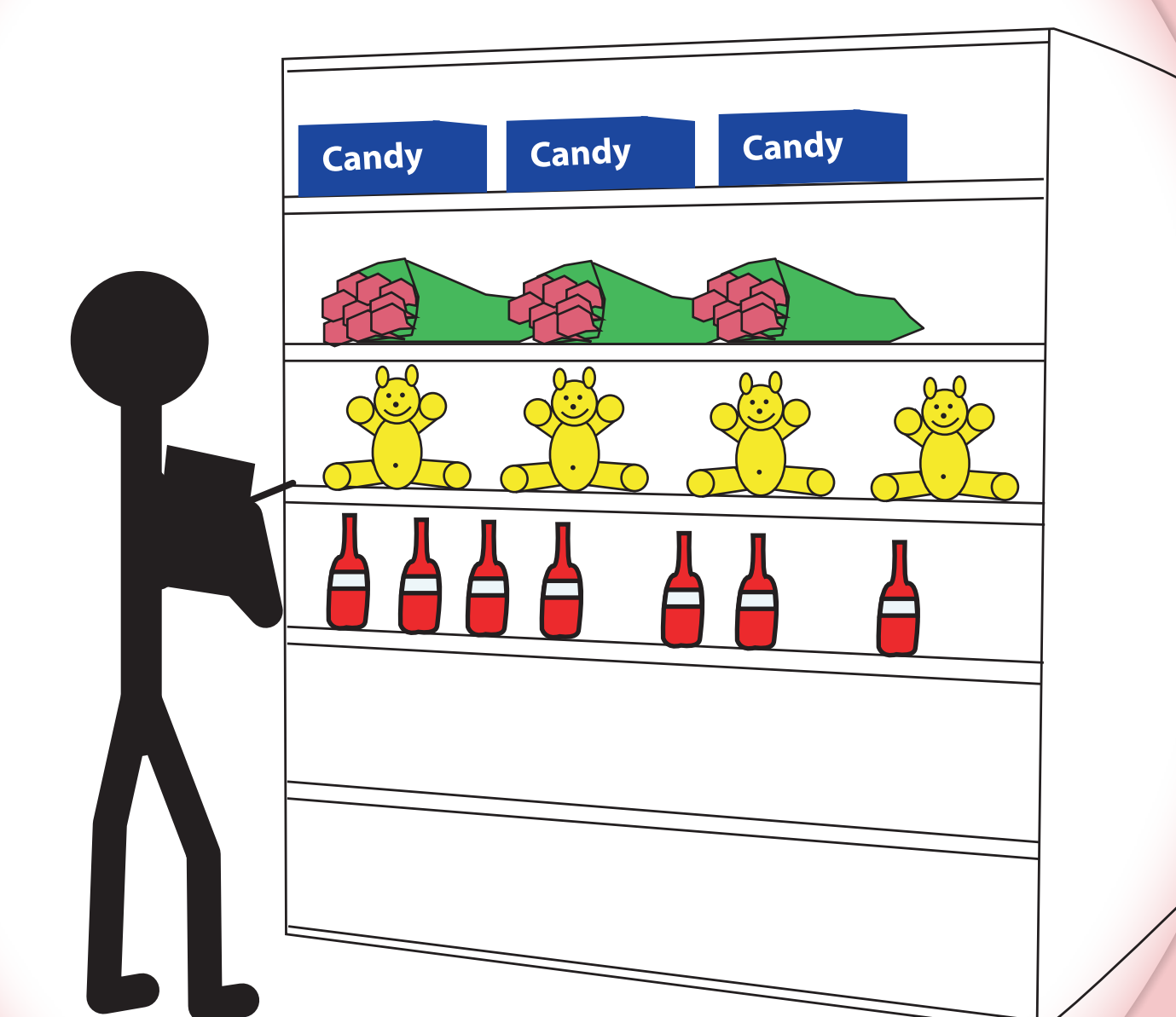
Process Flows

A process flow is a graphical representation of the sequence of all operations, movements, delays, decisions, and any other activities of a process. The process flow outlines and illustrates the interaction and actions that the user takes and how the he/she may or may not react. It covers the entire experience. It describes the sequence of events and the relationship of the tasks. The process flow can also identify actual and ideal paths that can identify problems and potential improvements. It is also used to verify that all the components of a system that have been accounted for and aid in the development of the project. The process flow shows possible routes that the user may take on the date and the results of each of his/her actions. A user may want to have a plan for a romantic date such as going to a movie or a fun date at a monster truck rally. By outlining these dating plan, a user will be able to decide which dating plan is most appropriate for his/her companion.



6

7



5